



# False Car

Part # 11-301

The Wurtec False Car has been designed with the user in mind. It is a flexible and easy to use false car.

The false car adjusts easily to fit rail systems with DBG's of 5'-6" (MIN) to 9'-0" (MAX).

It is built of lightweight aluminum for ease of handling and installation, while still providing the strength for a high capacity car.

This unique false car adjusts to fit guide rail faces of 5/8", 3/4", 1 1/8" and 1 1/4".

6200 Brent Drive  
Toledo, Ohio 43611  
Phone: 419-726-1066 or 800-837-1066  
Fax: 419-729-5764  
Email: [sales@wurtec.com](mailto:sales@wurtec.com)  
[www.wurtec.com](http://www.wurtec.com)

## Assembly & Installation Instructions

1. The false car is not to be used as a hoist for heavy material. The total load on the false car safety is not to exceed 1500 pounds. Remember to include the weight of the car ( at 230#), your platform, canopy, wire rope climber, people, tools and miscellaneous equipment in your weight.
2. Check the false car for damage, missing parts (see pages 4 & 13), loose bolts, etc. Check the roll safeties very carefully. Make sure safety springs work and rollers rotate freely (see details on pages 5, 6, 7 & 8). Lubricate all moving parts to insure proper operation.
3. The safety spacers are factory set for 5/8" rail faces (8, 11, 12, & 15# rails). See Page 5 for adjustments for other rail sizes. Check and tighten ALL hardware (nuts, bolts, etc.) See pages 6, 7, & 8.
4. Install the aluminum platform support angles (B) to the side stiles (A). See Page 4 and Page 8, Detail 1. Make sure the bolts stick through the angle and toward the channel. Bolt the diagonal braces (H) to the side stile using the bolts provided. See Page 9, detail 3. Tighten the hardware holding the diagonal brace (H) to the platform support angle (B). See page 10 detail 3.
5. If installed, remove the plumb lines from the main rails.
6. Temporarily secure the side stile assemblies to the rails and block them up so that they are level with each other.
7. The fixed (D) and adjustable guide angles (C), may be shipped loosely mounted to the side stiles (A). Tighten the fixed angle hardware. Locate the adjustable angle to suit the guide rails and tighten the hardware. See Page 9, Detail 4.
8. Swing the upper and lower cross channels (F, Page 4) together and fasten with the four carriage bolts (2 upper, 2 lower) provided, keeping the side stiles pressed against the guide rails.
9. Temporarily bolt the two (2) lift bars (I) together at the top hole. Attach the two (2) lift angles (G) to the upper, inside bolts (AN) on the lower Zee brackets (E) and to the upper cross channels (F). See Page 10, details 1 & 2.

10. Attach joist bracket (L) to the lower cross channels (F) as required. See Page 12. This allows you to provide a timber for additional support to the platform. This must be done when the DBG exceeds 7'-0".

11. String a heavy wire or cable from the eye bolt (AK) in the top spring loaded Safety Pawl Assy (W, Page 11) to the two (2) safety retraction arms (K) at the bottom of the side stiles. Double check and tighten all hardware.

12. Build a suitable platform for your car size. Securely attach your platform to the aluminum platform support angles (B).

13. Attach your hoisting device to the lift bars (I). The use of two (2) grade 5 bolts is recommended. These are not supplied with the car.

14. Remove your temporary fastenings, which were installed during step 6.

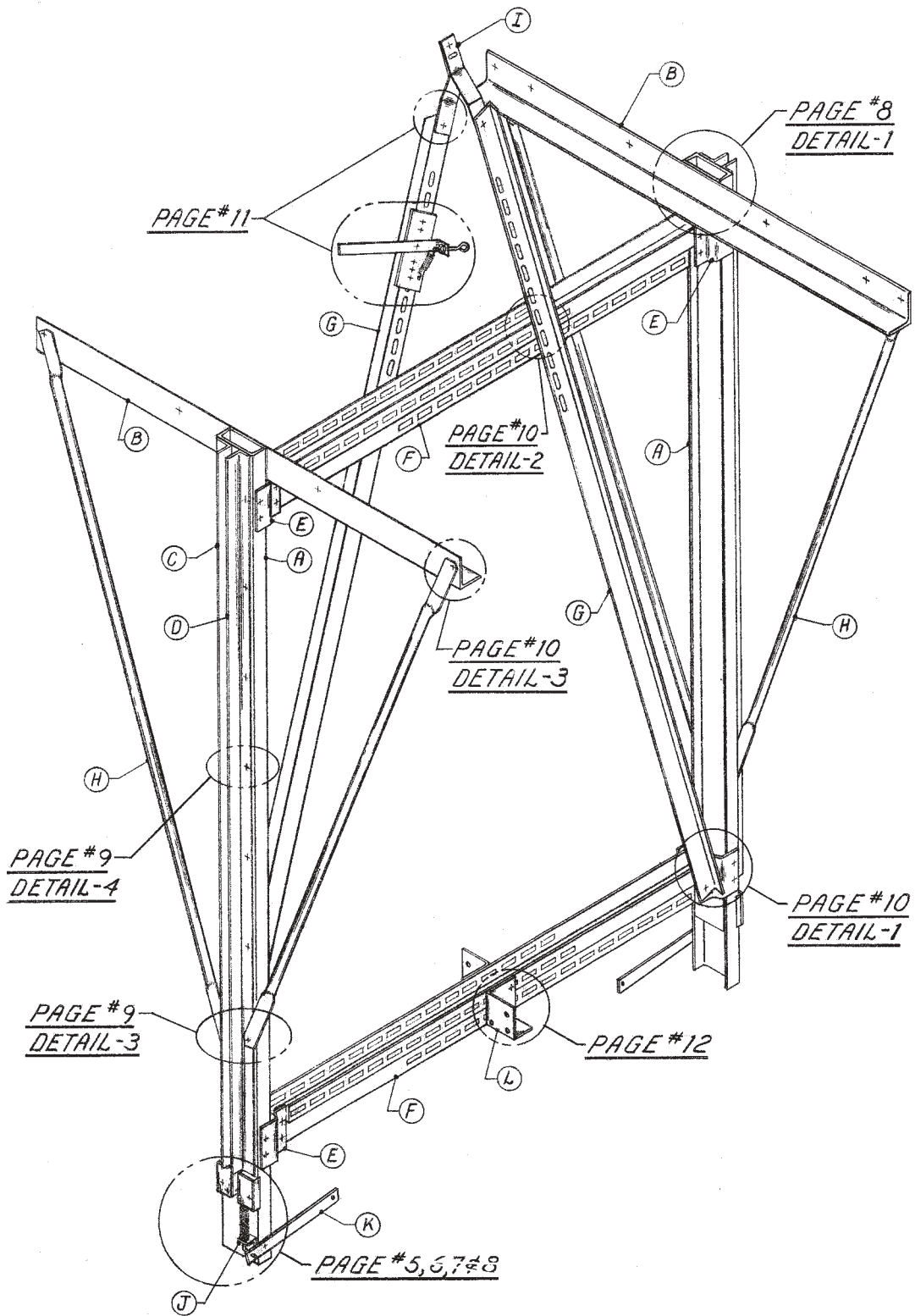
15. Install your plumb lines. Raise the car and check the operation of the safety to ensure that everything is in proper working order. **\*\* This Check Should Be Made Every Morning And Afternoon.\*\***

16. **CAUTION-** Do not attempt to release the safety when it is set. The L-Rods (S) are designed to break if the car is not raised. Always raise the car before attempting to operate the safety levers (W or K).

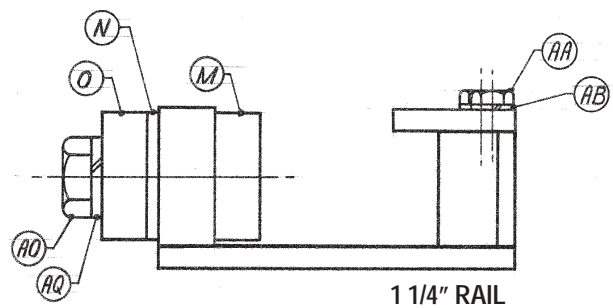
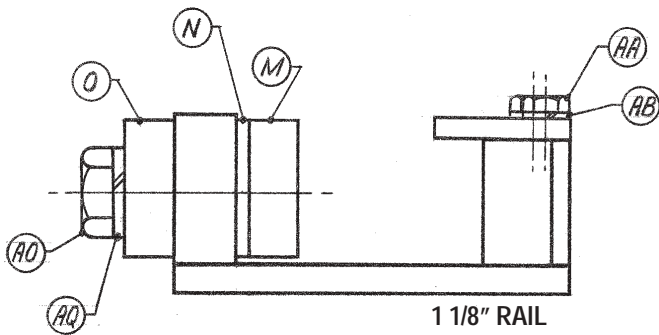
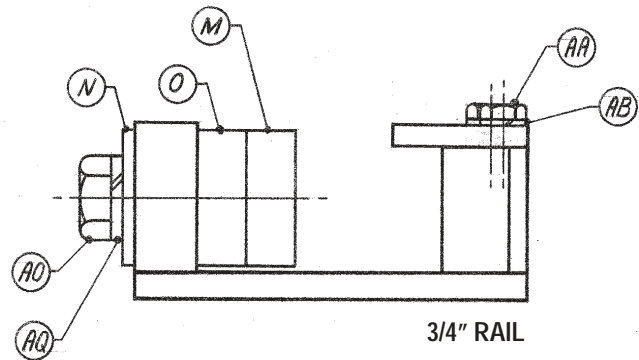
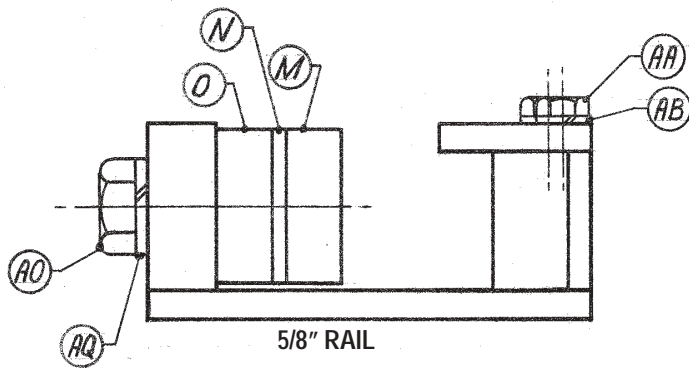
17. Check the entire false car for worn or broken parts twice daily. Pay particular attention to the safety rollers, and related parts. A log sheet should be kept recording these twice daily checks.

18. All persons entering the hoistway should wear appropriate safety gear with a lanyard that is tied off to an independent life line.

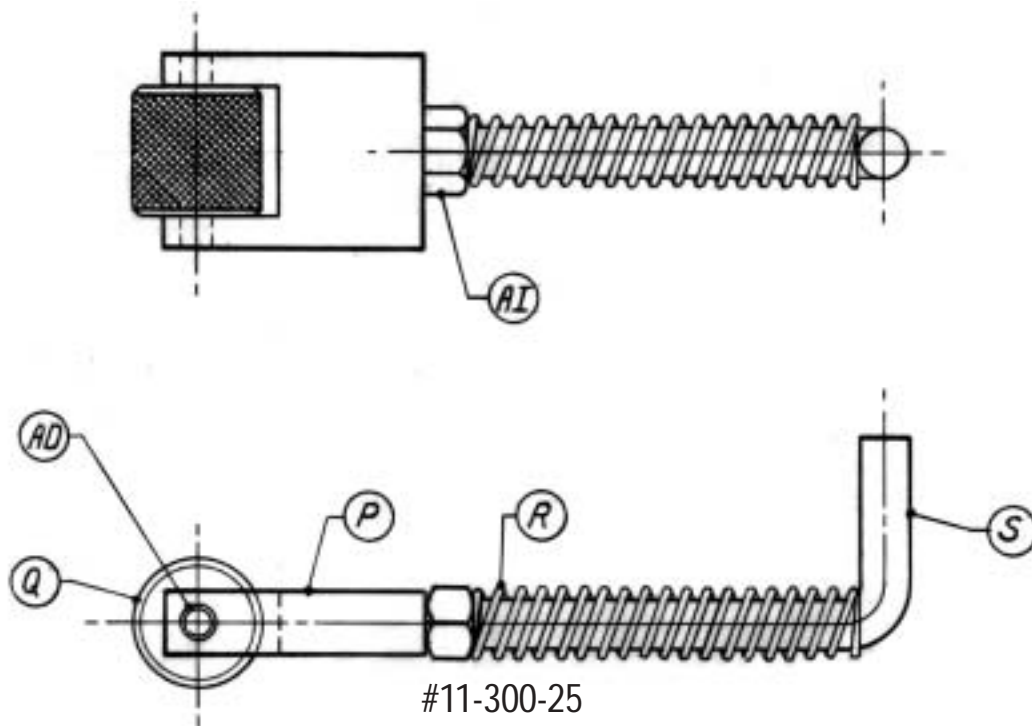
19. When using a false car, it is required that approved guardrails and toe boards be provided on your platform. Include these weights in your total false car weight calculations.

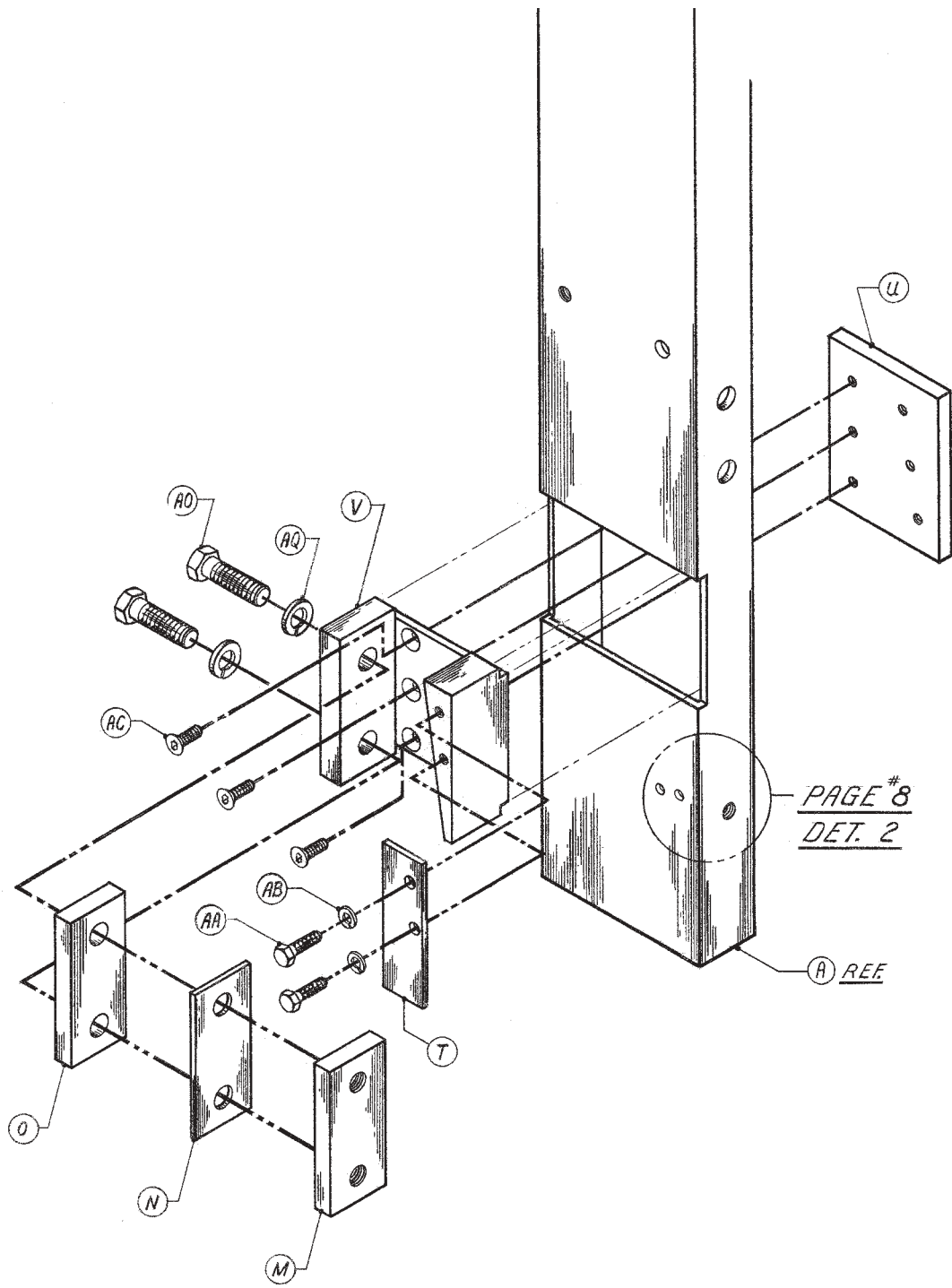


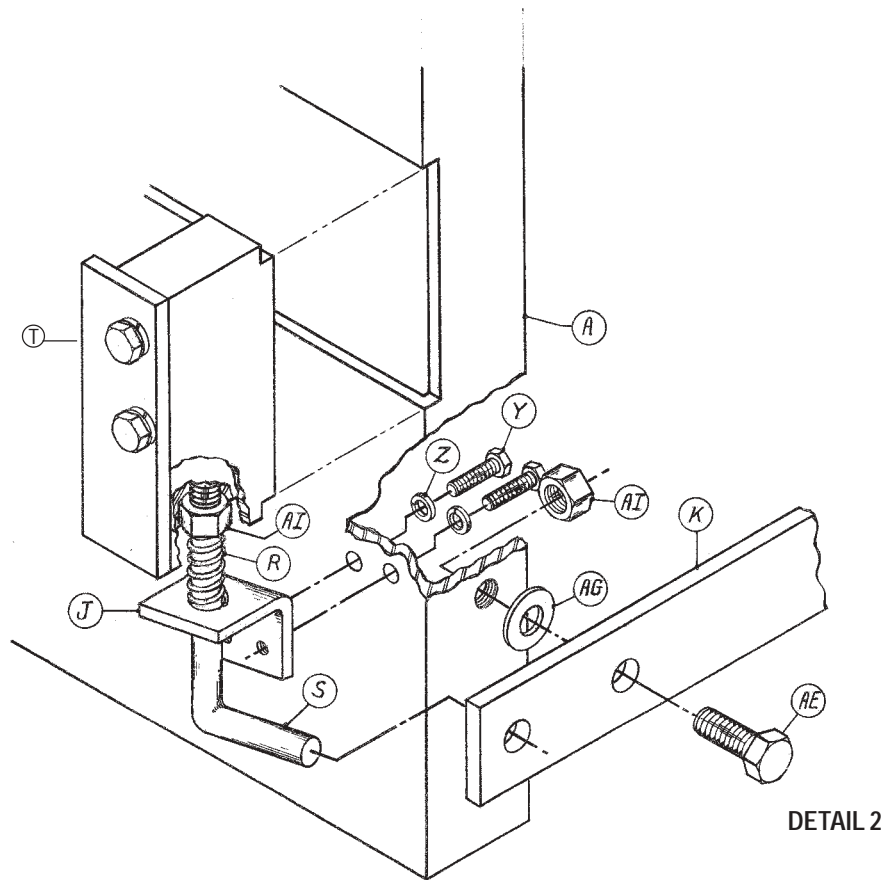
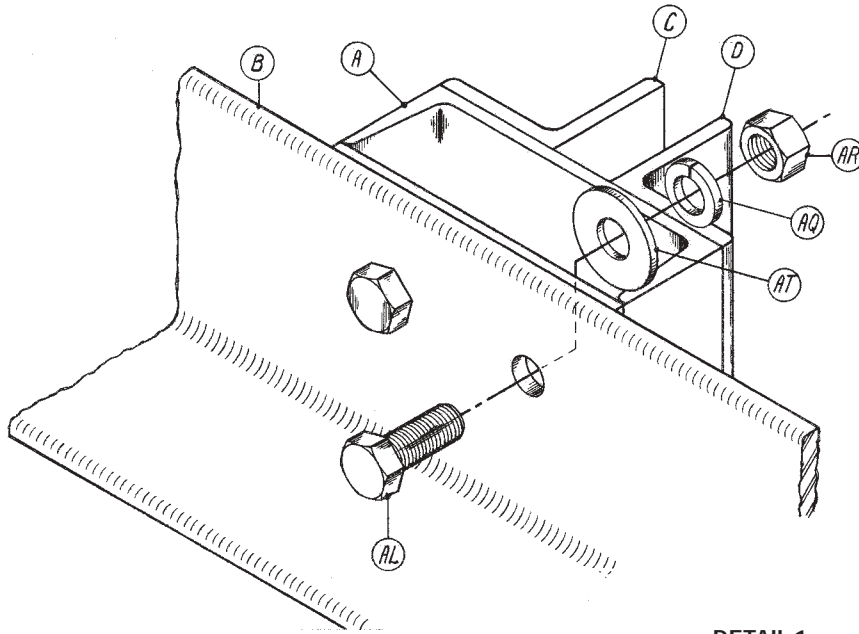
Use the following sketches to determine the correct safety block arrangement for your rail size. Note the location of the 1/8" (N) and 1/2" (O) spacers in relation to the tapped spacers (M) and each other in each case.



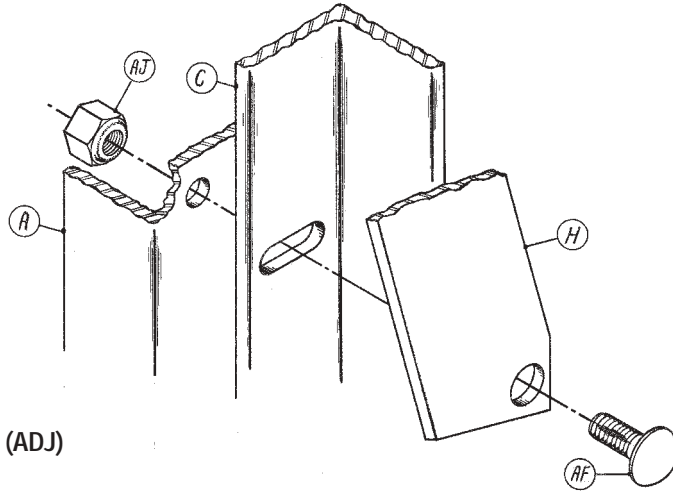
The roller assembly #11-300-25 is shipped loose. Insure that the L-rod (S) is threaded 1/2" into the fork (P). Align the L-rod (S) as shown and tighten nut (AI) against fork (P). Insert assembly into tension bracket (J) and install safety cover plate (T). See page 8, detail 2. Place safety retraction arm (K) over the L-rod (S) and fasten to side stile (A). See pages 4, 7 & 8.



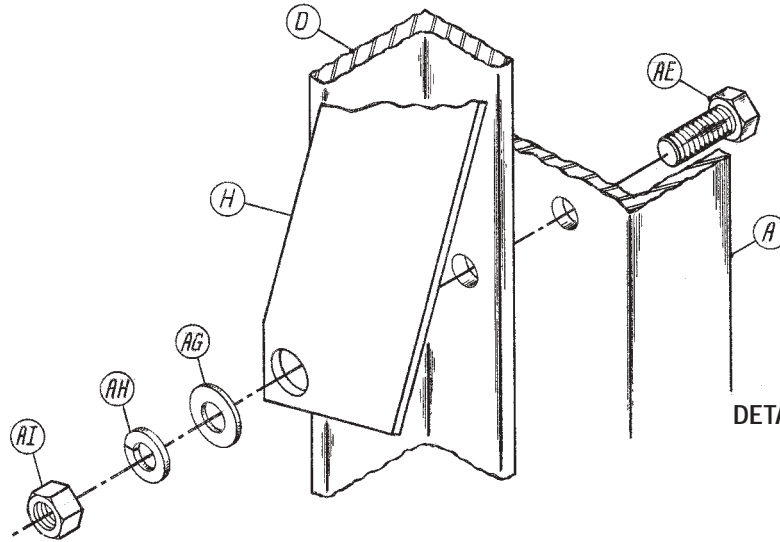




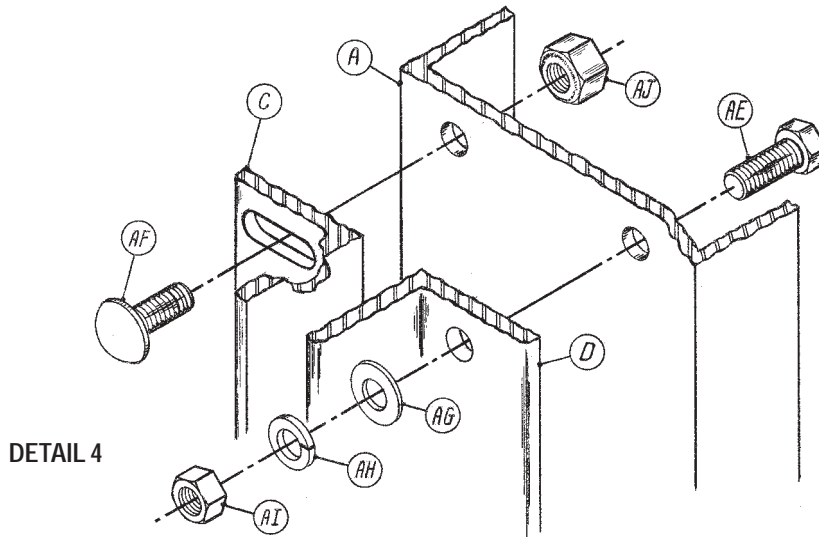




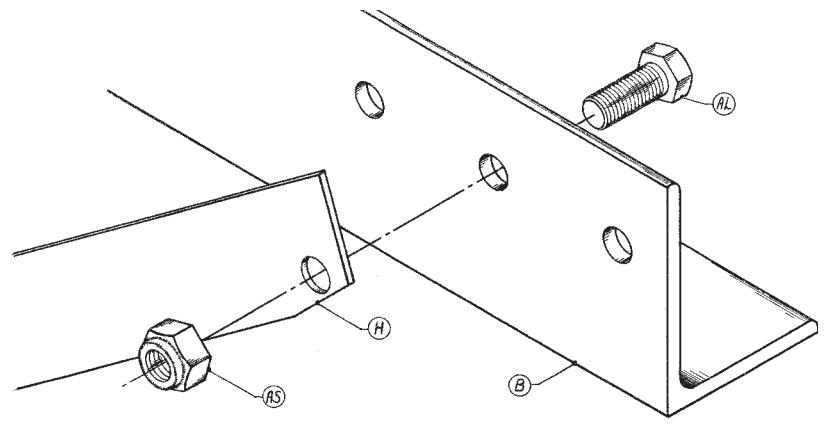
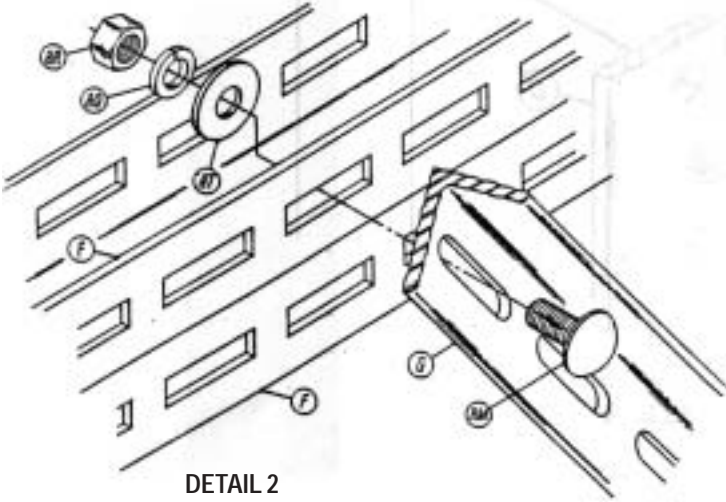
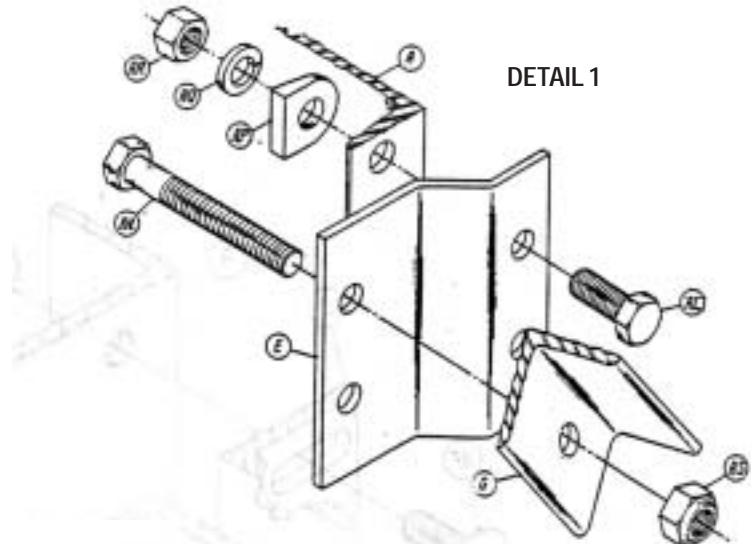
DETAIL 3 (ADJ)

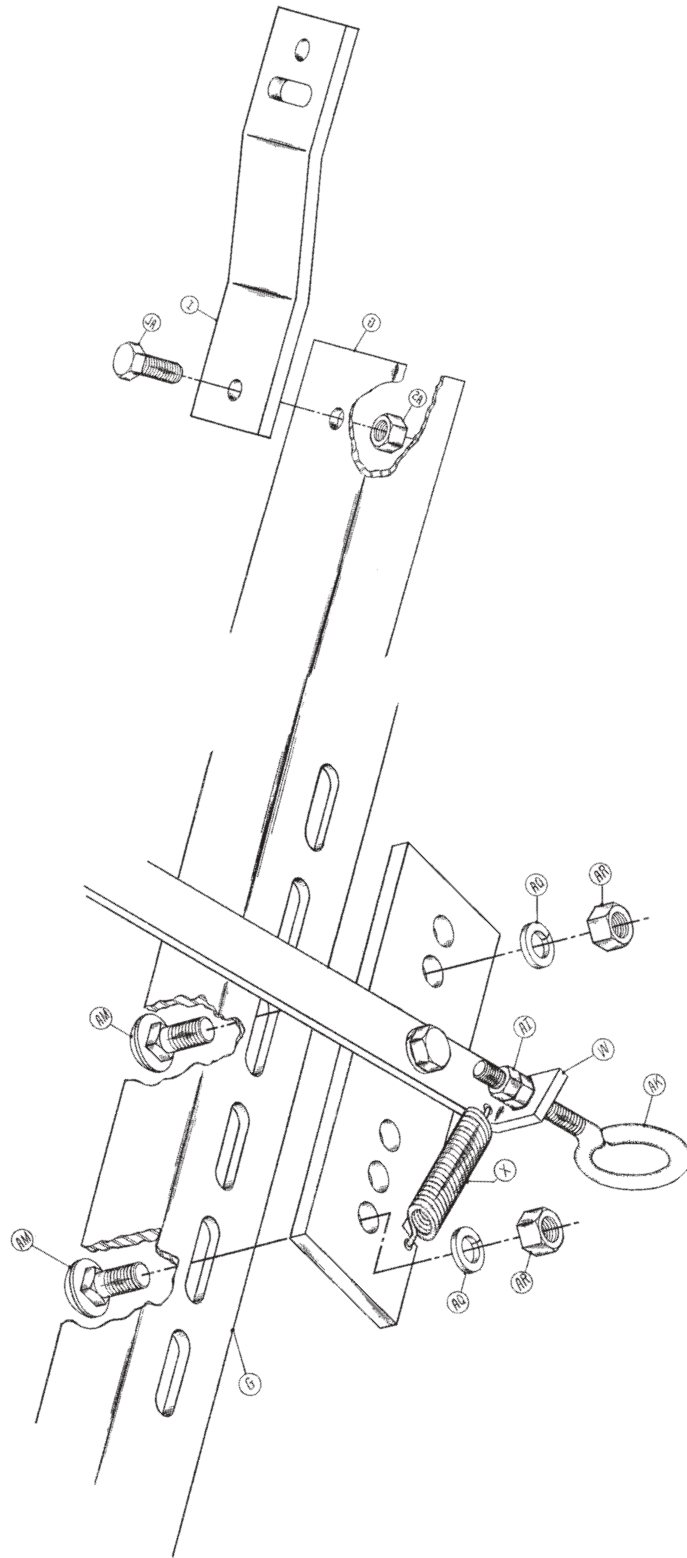


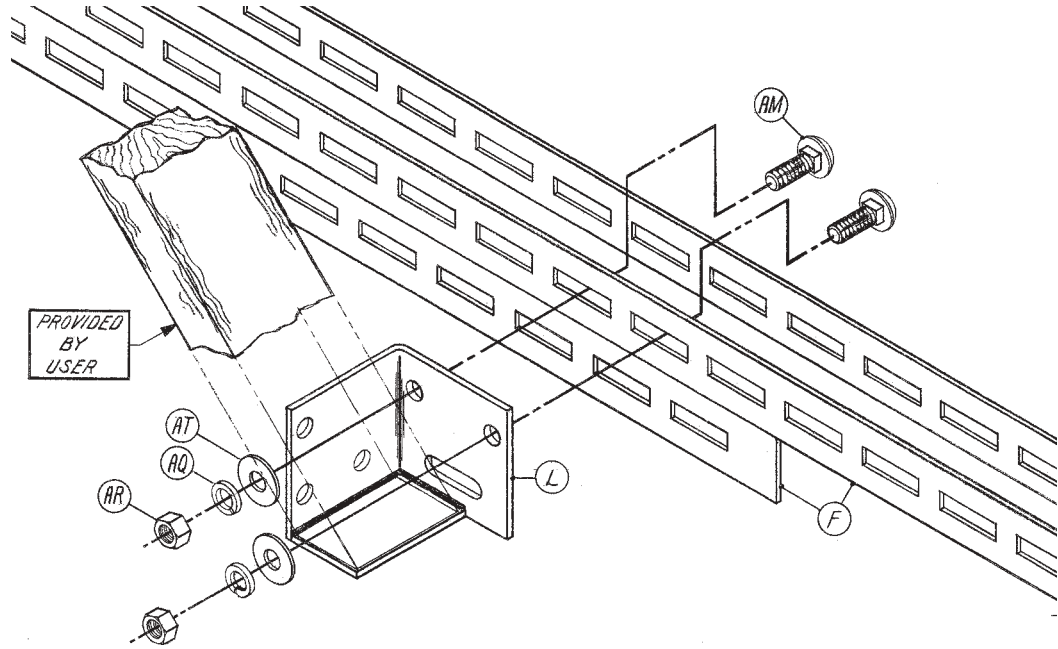
DETAIL 3 (FIXED)



DETAIL 4







ITEM	QTY/ASSY	PART NO.	DESCRIPTION
A	2	11-300-01	Side Stile
B	2	11-300-02	Platform Support Angle
C	2	11-300-03	Adjustable Guide Angle
D	2	11-300-04	Fixed Guide Angle
E	8	11-300-05	Zee Bracket
F	4	11-300-06	Adjustable Cross Channel
G	2	11-300-07	Lift Angle
H	4	11-300-08	Diagonal Brace
I	2	11-300-09	Lift Bar
J	2	11-300-10	Tension Bracket
K	2	11-300-11	Safety Retraction Arm
L	2	11-300-12	Joist Bracket
M	2	11-300-15	Tapped Plate
N	2	11-300-16	1/8" Spacer
O	2	11-300-17	1/2" Spacer
P	2	11-300-18	Fork (Roller Retainer)
Q	2	11-300-19	Knurled Roller
R	2	11-300-13	Safety Retraction Spring
S	2	11-300-20	L-Rod
T	2	11-300-21	Safety Cover Plate
U	2	11-301-22	Retaining Plate
V	2	11-301-23	Safety Block
W	1	11-300-24	Safety Pawl Assembly
X	1	11-300-14	Cot Spring
Y	4	29049	#10-32 X 1/2" Pan Head Screw Z/P
Z	4	33614	#10 Split Lock washer, Z/P
AA	4	11003	1/4"-20 X 3/4" HHCS, Z/P
AB	4	33618	1/4" Split Lock Washer Z/P
AC	12	24225	1/4"-20 x 1" FLT SCKT HD CS
AD	2	64251	1/4" X 1 1/2" Roll Pin
AE	18	11105	3/8"- 16 X 1" HHCS, Z/P
AF	16	21355	3/8"- 16 X 1" CAR. Bolt Z/P
AG	18	33082	3/8" SAE Flat Washer Z/P
AH	16	33622	3/8" Split Lock Washer, Z/P
AI	20	36106	3/8"- 16 Full Nut, Z/P
AJ	16	37024	3/8"- 16 Elastic Stop Nut, Z/P
AK	1	42239	3/8"- 16 X 3" Bent I Bolt, Z/P
AL	26	11207A	1/2"- 13 X 1 1/4" HHCS, Z/P
AM	12	21557	1/2"- 13 X 1 1/4" Car Bolt Z/P
AN	5	11221 A	1/2"- 13 X 4 1/2" HHCS, Z/P
AO	4	17210	1/2"- 20 X 1 3/4" GRD5 HHCSZP
AP	16	33334	1/2" Sq. Bevel Washer
AQ	42	33626	1/2" Split Lock Washer, Z/P
AR	32	36110	1/2" - 13 Full Nut, Z/P
AS	11	37030	1/2"- 13 Elastic Stop Nut, Z/P
AT	20	33086	1/2" SAE Flat washer, Z/P